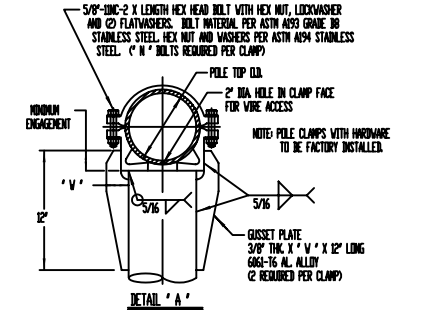
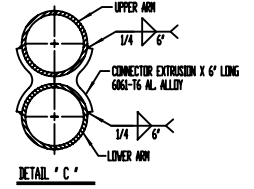
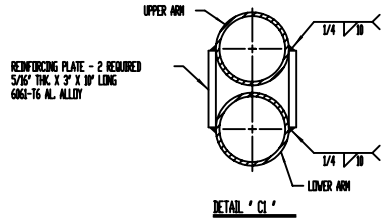
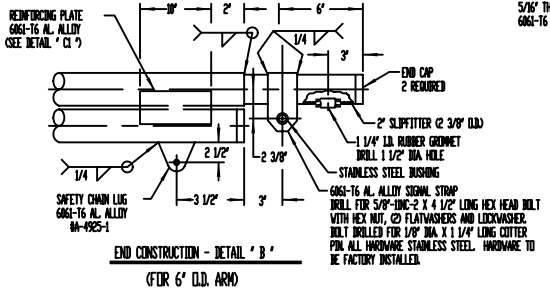
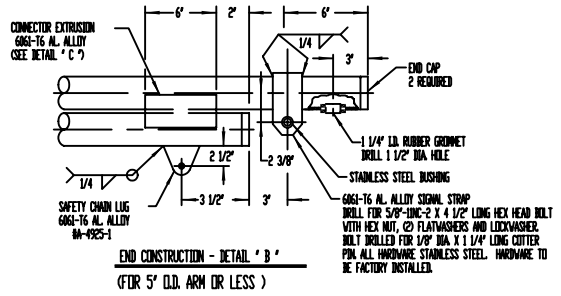
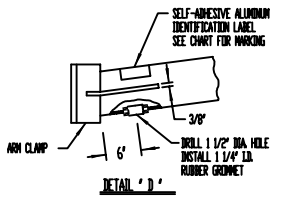
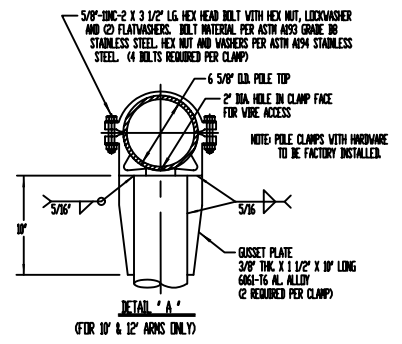


- NOTE:
1. - USE 4043 WELD WIRE.
 2. - 6063 ASSEMBLY .375 WALL OR LESS TO BE HEAT-TREATED TO T6 TEMPER AFTER WELDING.
 3. - ARM TO BE FIELD DRILLED FOR MID-MAST MOUNTED SIGNAL ELECTRICAL WIRING.

DRAWING NUMBER	ARM LENGTH	MAST ARM SIZE "D" X "T"	MAST ARM TAPER "D" X "DI"	MAST ARM ELLIPSE			ARM ROSE "R"	IDENTIFICATION MARKING		
				"E1" X "E2"	"S"	"L1"				
G-105240-0	10' - 0"	3 1/2" X .156W	3 1/2" X 2 3/8"	4 1/4" X 2 3/8"	30"	---	3' - 1"	2' - 3"	5' - 9"	ECS - 10MA'
G-105240-1	12' - 0"	3 1/2" X .156W	3 1/2" X 2 3/8"	4 1/4" X 2 3/8"	30"	---	3' - 11"	3' - 11"	5' - 9"	ECS - 12MA'
G-105240-2	15' - 0"	4" X .156W	4" X 2 3/8"	5 1/8" X 2 3/8"	30"	---	4' - 7"	4' - 7"	5' - 9"	ECS - 15MA'
G-105240-3	18' - 0"	5" X .156W	5" X 2 3/8"	6 3/4" X 2 1/2"	30"	3' - 11"	7' - 10"	3' - 11"	5' - 9"	ECS - 18MA'
G-105240-4	20' - 0"	5" X .156W	5" X 2 3/8"	6 3/4" X 2 1/2"	30"	4' - 7"	9' - 2"	4' - 7"	5' - 9"	ECS - 20MA'
G-105240-5	25' - 0"	5" X .188W	5" X 2 3/8"	6 3/4" X 2 1/2"	30"	6' - 9"	13' - 2"	5' - 2"	5' - 9"	ECS - 25MA'
G-105240-6	30' - 0"	6" X .156W	6" X 2 7/8"	7 5/8" X 3 1/2"	42"	7' - 0"	14' - 0"	7' - 0"	6' - 9"	ECS - 30MA'
G-105240-7	35' - 0"	6" X .188W	6" X 2 7/8"	7 5/8" X 3 1/2"	42" MAX	9' - 10"	18' - 10"	9' - 0"	6' - 9"	ECS - 35MA'



ARM LENGTH	POLE TOP O.D.	MINIMUM ENGAGEMENT	PLATE WIDTH "V"	NO. OF BOLTS "N"	BOLT LENGTH
15' - 0"	6 5/8"	2"	2 1/2"	4	3 1/2"
18' - 0"	8"	2 1/2"	3"	4	3 1/2"
20' - 0"	8"	2 1/2"	3"	4	3 1/2"
25' - 0"	8"	2 1/2"	3"	4	3 1/2"
30' - 0"	9"	2 1/2"	2 1/2"	6	6"
35' - 0"	9"	2 1/2"	2 1/2"	6	6"



A		ANN'D BY - P' ARM		REV		DATE		P&K POLE PRODUCTS, INC. B4 Foundry St., Newark NJ	
A		ANN'D BY - P' ARM		REV		DATE		ESSEX COUNTY - TRAFFIC MAST ARM STANDARDS	
A		ANN'D BY - P' ARM		REV		DATE		G-105240	
A		ANN'D BY - P' ARM		REV		DATE		NONE	